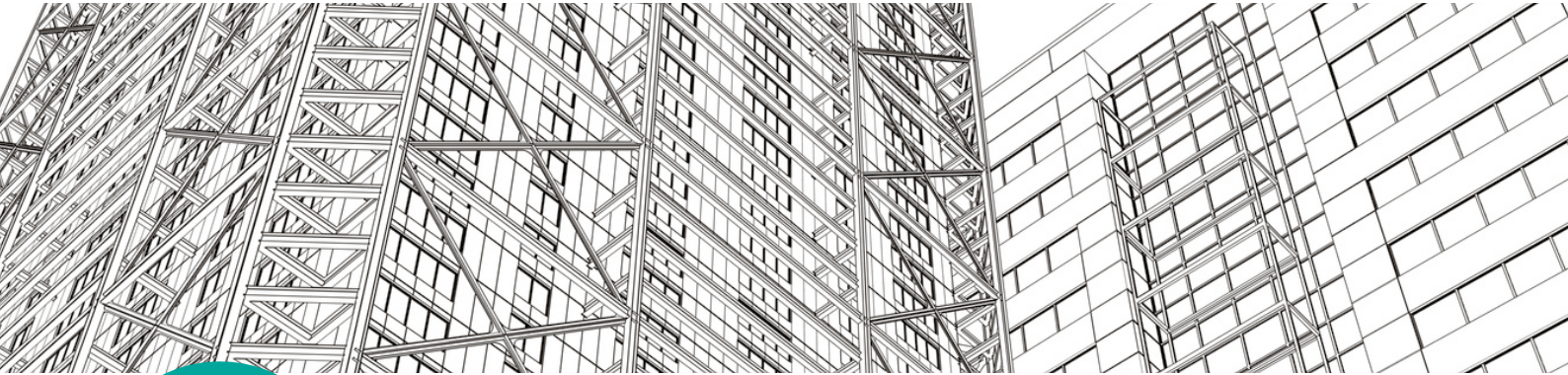


# KutchCAD® 2019



*The digital model of a previously imported project permits the generation of bills of quantities, while also assisting with daily site management: materials supply, work status, supervision... (methods).*

KutchCAD Full, an outgrowth of ArchiTECH.PC Full, offers a unique array of tools for enterprises wishing to prepare estimates and bills of quantities for projects designed by third parties (architects, contractors, home builders) using their own, previously purchased software.

KutchCAD 2019 imports project files created by third parties in DXF, DWG, PDF, BMP, and IFC formats. The software is offered in two versions.

## KutchCAD Lite

In this lite version of the program, quantities from selected objects are read in directly from a blueprint or 3D model. The values are displayed in an overlay window usable with any software, and in this way can simply be copied and pasted into the corresponding cells of the estimate.

## KutchCAD Full

The program's full version can be combined with the libraries of more than twenty different programs used to create estimates and bills of quantities.



One or more of the work types (lines of the estimate) in the library is assigned to a quantity recognised by KutchCAD (unit, length, surface, or volume) and a BOQ is generated using the client's own software.

Formulas may be created for making the calculations, so that bills of quantities may be obtained even for elements not included on the drawings.

## Intégration totale des pièces écrites

KutchCAD includes total price breakdown, special technical specification, and descriptive notice capabilities. Estimates are displayed as a KutchCAD view analogous to its 2D and 3D views. Libraries are generated directly in KutchCAD or, where originating from an interfaced software package, are connected to it in the manner of a plug-in. Where faster input or a reorganisation of the sections and subsections of related work types is desired, libraries can be exported to Excel, modified, then reimported.

Written records can be accessed from the project organisation dialog box or by summoning the estimate template from the program's right-click menu. The program lets you move back-and-forth between the 2D and 3D views of the estimate, so that changes are managed synchronously. KutchCAD also includes an interactive report generator to assist in page layout and document customisation tasks (logo, columns, page breaks, etc.).

## Front view creation

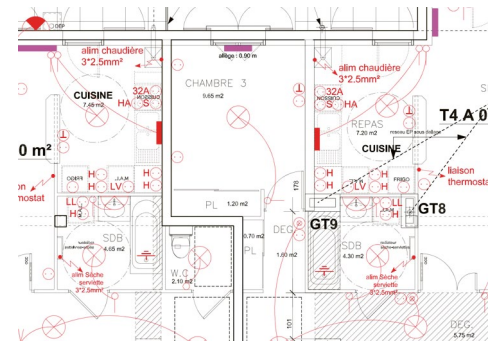
Transform the perspective views of buildings in photographs into front views. The KutchCAD toolkit permits the collection of individual building

elevations into a single view, so that jobs can all be managed from the same window.



Upper left: original photograph.  
Upper right: facade transformed into a front view with survey of the rendering (green surface)

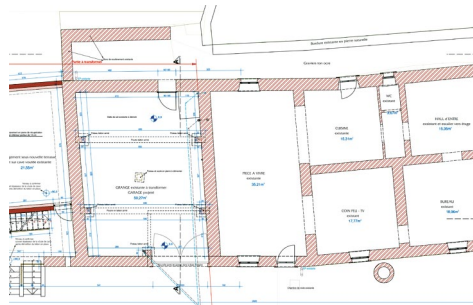
various device symbols (switches, outlets, lighting and heating fixtures...), which can then be relocated without breaking connections. These symbols can be configured either with pricing for full estimates, or with duct and cable lengths only for estimates to be sent to potential subcontractors.



### Buiding measurement and dimensioning

Given a freehand sketch, KutchCAD adjusts the drawing automatically to data derived from Bluetooth devices, such as laser measurers and Leica Builders.

Opening, pillar, and column measurements (position, width, height) are gathered from a single point by mounting the measuring device used onto a tripod. Roof measurement is conducted from the ground and involves recording the altitudes of three points on each face to be reconstructed. For complex roofs measured from the building top, the survey is performed as it is for rooms. First, the height of the gutter or ridge line is entered, after which a third point on the roof permits the derivation of the slope: 3D dimensions will be retained regardless of the value obtained, but the plan view will be adjusted automatically.



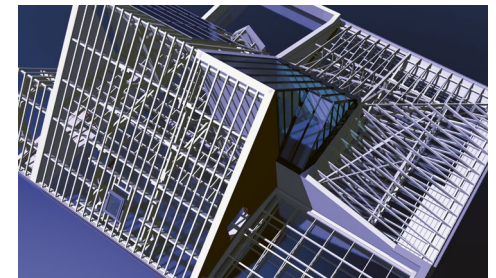
### Bills of quantities for carpenters

Library objects (purlins, rafters, battens) can be placed on roofing panels in a single step, according to specific criteria (cross sections, spacing, etc.). Settings include:

- The reference point of the element
- The thickness of the roof panel
- The total distance between two points on a roof panel
- The offset of the first element
- The spacing between beams, the number of beams desired, headers, etc.
- The final spacing.

Other elements (valleys, hips) can be added piece by piece.

At the same time traditional roof structures can be modelled in cross-sections or 3D views using pre-recorded elements (hip rafters, tie beams, hallmarks, struts, hammer beams, etc.).



### Bills of quantities for electricians and plumbers

Standard room descriptions can be saved in the library and used to generate estimates without the need of placing 2D symbols on the plan. Bills of quantities and estimates can also be created from implementation plans by indicating the types of devices and their exact locations.

The program now facilitates this function through the inclusion of an exhaustive library of electrical symbols. The new tools permit the placement of

### Possible upgrades

Based on the ArchiTECH.PC drawing engine, KutchCAD has been developed for the sole purpose of generating bills of quantities on plans provided by third parties. Economists and construction companies desiring to produce plans of their own, create photorealistic images, and insert them into photographs of actual building sites should upgrade to ArchiTECH.PC First Edition, providing them with all the options they need to customise the planning process to fit their particular business activity.

### MINIMUM SYSTEM REQUIREMENTS

- Windows 7, 8, 10, Server 2008 et Server 2012 in 32 or 64 bits
- Intel Core i-7-4770 (3.40 GHz) or equivalent
- SSD 120 Gb, including 400 Mb for KutchCAD
- HDD 500 Gb for data
- 4 Gb for RAM
- 1280x1024 resolution, 16 million colors
- NVIDIA GeForce GTX 760 card with 2 Gb dedicated to graphics
- Keyboard, mouse, printer with Windows print drivers

EDICAD is certified



For more information, visit [www.edicad.com](http://www.edicad.com) or write to [info@edicad.com](mailto:info@edicad.com)  
EDICAD SAS - 31 rue des Pinsons - La Croix de Fer - 46000 CAHORS - FRANCE  
Phone: +33 (0) 565 239 179 - FAX: +33 (0) 565 230 465

Non contractual illustrations - Copyright EDICAD 2019 - All rights reserved