

ArchiTECH.PC® '21



ArchiTECH.PC manages all the missions of the builder and the designer in a global, integrated, chained and automatized solution: 2D drawing, 3D modeling, imagery, virtual tours, insertion in the site and all the written documents.

From their conception to the delivery of the keys, ArchiTECH.PC '21 allows you to manage increasingly complex projects through a simple and user-friendly interface and tools dedicated to the specifics of your business for complete missions or technical studies from BIM.

New Room tool

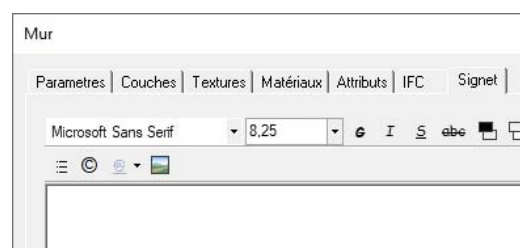
The **Room** tool allows:

- the creation of rooms based on regular or irregular polygons in a 2D or 3D view, as well as the definition of their location
- the automatic calculation of the surface and the volume of rooms thus created
- the generation of surface tables.



New parameters

All ArchiTECH.PC drawing tools now have a **Bookmark** tab to automatically add text on elements drawn in 2D view.



Text tool : Rich Text Format (RTF)

The RTF format (Rich Text Format), developed by Microsoft, is an uncompressed format recognized by most word processing software such as Word, OpenOffice Writer or LibreOffice Writer. Now available in ArchiTECH.PC, this format allows:

- the addition of tables, images, photos, etc.
- the choice of fonts, their size, alignment, removal, color, appearance (underlined, crossed out...), etc.

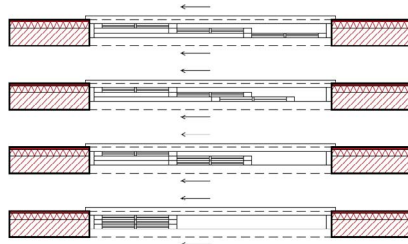
New library objects

The **Door** tool has been enriched with new templates:

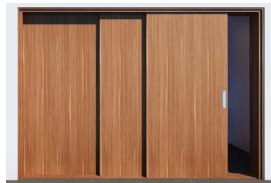
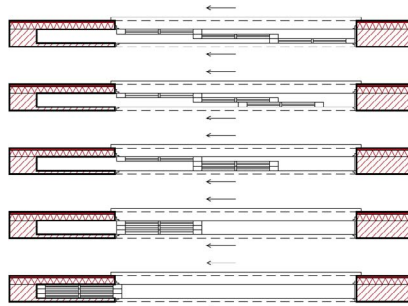
- Asymmetrical double doors



- 3-leaf sliding doors

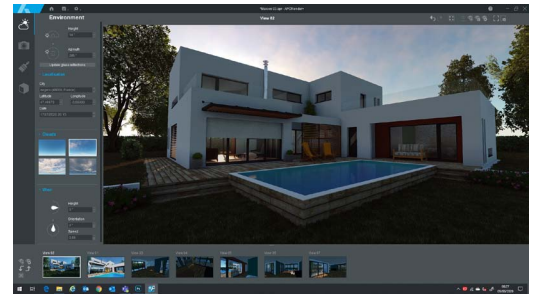


- Sliding doors with 3 leaves

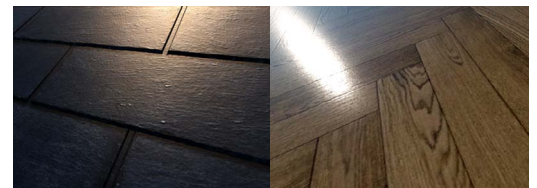


Connection with APCRender+, new photorealistic rendering engine

ArchiTECH.PC can be connected to the new APCRender+ imagery engine with the latest technological advances in real-time 3D rendering:



- Precise simulations from a new heliodon (place, date, time)
- Elevation views and orthographic perspectives
- New libraries of objects and high-resolution materials



- Triplanar materials for the application of textures on complex surfaces (curved walls)
- White models
- Virtual tours using a connected VR headset
- Instant image calculation: click, it's saved!

Import/export

New import and/or export file formats have been added to the software:

- DWF, DWFX (import/export)
- DAE (import/export)
- DGN (import)
- SVG (import)
- PDF vectoriel (import)

MINIMUM SYSTEM REQUIREMENTS

- Windows 7, 8, 10, Server 2008 et Server 2012 in 32 or 64 bits
- Intel Core i-7-4770 (3.40 GHz) or equivalent
- SSD 120 Gb, including 400 Mb for ArchiTECH.PC and 7 Gb for the textures and the Render+ option
- HDD 500 Gb for data
- 4 Gb for RAM
- 1280x1024 resolution, 16 million colors
- NVIDIA GeForce GTX 760 card with 2 Gb dedicated to graphics
- Keyboard, mouse, printer with Windows print drivers

Automized management of tenders with SPIGAO

The direct connection of ArchiTECH.PC with the SPIGAO application allows:

- the detection of tenders in your geographical sector
- direct import of the Analysis of the Global and Forfait Price
- Quantification of projects by simple drag-and-drop
- Analysis and comparison of the result with the quantities of the chosen tender
- the publication of your submission to this tender.

Survey

New plugins have been developed to extend the compatibility of ArchiTECH.PC with **Batigest Connect**, **BatLib**, **ICOST** and **RODOS**.

EDICAD is certified



For more information, visit www.edicad.com or write to info@edicad.com
 EDICAD SAS - 31 rue des Pinsons - La Croix de Fer - 46000 CAHORS - FRANCE
 Phone: +33 (0) 565 239 179 - FAX: +33 (0) 565 230 465

Non contractual illustrations - Copyright EDICAD 2019 - All rights reserved

