

Thanks to its unequalled ergonomics and efficiency, compatible with the market's estimating/management software, KutchCAD is the indispensable professional assistant for your measurements and construction site surveys.

Issued from ArchiTECH.PC, KutchCAD has been developed to generate quantity surveys and estimates by reproducing and automating the traditional workflow. It combines the features specific to companies working in the BIM environment, on the basis of projects designed by third parties (architects, project managers, homebuilders), and from their usual estimating software.

KutchCAD, a complementary tool for estimating/management software

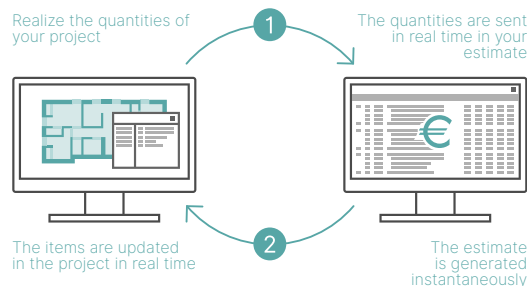
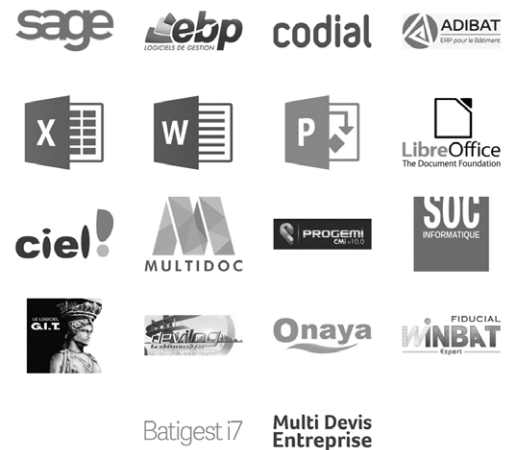
KutchCAD imports project files in DXF, DWG, PDF, bitmaps, IFC formats, and offers the quantity survey of selected items, in direct reading, on plan views or on the 3D model.

Synchronization of ArchiTECH.PC and estimating/management software

The principle of synchronization consists of a direct link between the ArchiTECH.PC database and the database of an estimating/management software, that is to say, without the obligation to send the project through the export and import filters from one software to the other in order to process it. Each database waits for a signal from the other to establish communication, which means that any creation or modification of an item in ArchiTECH.PC appears simultaneously in the estimating/management software, and vice versa. This direct link avoids errors and redundant entries. Thanks to this, all items transfers are 100% reliable.

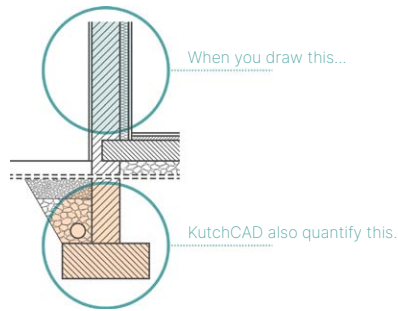
Compatibility with the estimating / management software

In addition to the synchronization, KutchCAD can be connected to the libraries of more than twenty estimating and quantity surveying software on the market via plugins.



Calculation formulas for undrawn elements

Calculation formulas can be created to obtain the quantity survey of non-drawn elements, without having to represent them.

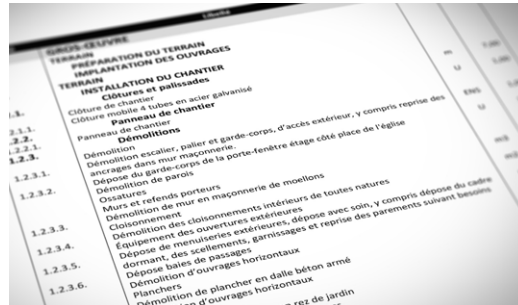


Above, on the left: original photo.
On the right: straightened photo with structure of the building and survey of the plaster surfaces (in green and orange).

Total integration of written documents

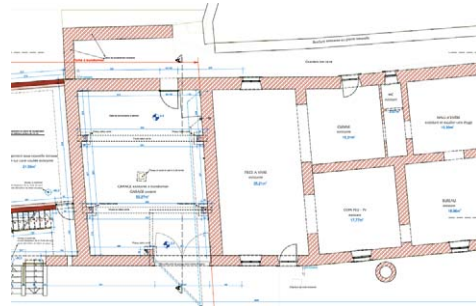
The estimates, the work contracts and the planning are integrated in ArchiTECH.PC. The estimate becomes a view of ArchiTECH.PC in the same way as a 2D or 3D view.

The libraries are created directly in ArchiTECH.PC or are connected to it in plug-in when they come from estimating software interfaced with it. A tool also allows the layout and the personalization of the written documents (logo, columns, page breaks, etc.).



Building surveys and measurements

Starting from a freehand sketch in ArchiTECH.PC, the drawing is automatically adjusted in 3D to each data coming from a laser meter or a Leica Builder station (devices connected by Bluetooth).



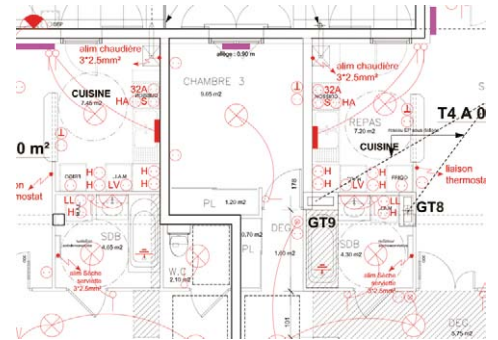
Quantity Surveying from photos

KutchCAD has a feature to transform photographs of buildings (seen in perspective) in geometrical views (facades in elevation) with scaling, and tools to reconstitute the complete structure of the building.

Electrical and plumbing

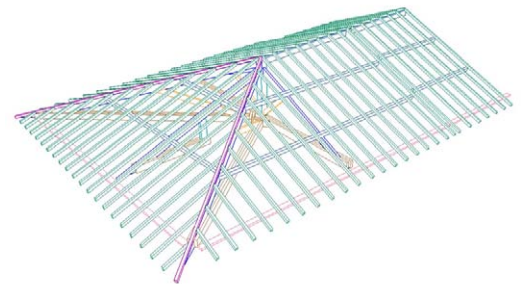
A standard description per room can be saved in the library and produce an estimate without having to draw any symbols in 2D. The quantity survey and the estimate can also be generated by drawing the detailed plans, indicating the nature of the equipment and their exact position.

For this, KutchCAD has a library of symbols and tools to layout the devices (switches, sockets, light points ...), then draw the lines between them. The items can be calculated by unit or in detailed mode.



Modeler of frameworks

KutchCAD can automate the drawing of framework elements (purlins, common rafters, plates, valley rafters...) and model traditional frameworks on sections or in 3D views from pre-recorded elements (hip rafters, collars, king posts, struts, hammer beams...).



Import/export

KutchCAD allows the import and/or export of projects in DXF, DWG, DWF, DWFx, DAE, DGN, SVG, bitmaps, vectorial PDF, IFC.

MINIMUM SYSTEM REQUIREMENTS

- Windows 7, 8, 10, Server 2008 and Server 2012 in 32 or 64 bits
- Intel Core i-7-4770 (3.40 GHz) or equivalent
- SSD 120 Gb, including 400 Mb for KutchCAD
- HDD 500 Gb for data
- 4 Gb for RAM
- 1280x1024 resolution, 16 million colors
- NVIDIA GeForce GTX 760 card with 2 Gb dedicated to graphics
- Keyboard, mouse, printer with Windows print drivers

EDICAD is certified



For more information, visit www.edicad.com or write to info@edicad.com
EDICAD SAS - 31 rue des Pinsons - La Croix de Fer - 46000 CAHORS - FRANCE
Phone: +33 (0) 565 239 179 - FAX: +33 (0) 565 230 465

Non contractual illustrations - Copyright EDICAD 2021 - All rights reserved